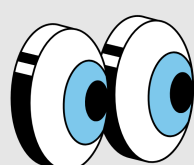




JUNE NEWSLETTER

A multi-layered local organisation working with the community in a diversity of ways



Great to see you again

SECRET ANGELS 7; WHAT'S BEEN HAPPENING

1

VOLUNTEERING PROGRAMME

We are excited that OUR volunteering programme is growing. This programme was put in place to support those in the community who are unable to fund themselves with regards to essential social support. We are currently matching our cohort of volunteers to our clients in the community.

EMPLOYABILITY PROGRAMME

Our 10 week Employability Programme is starting this month. The programme is focused on implementing tools and skills to encourage individuals into the workplace.

2

3

SPONSER AN ELDER

Our exciting new programme helps us reach out to our older communities here or further afield. Individuals can sponsor an elder who requires social support by donating a monetary value to fund social care.

RESPIRE ACCOMMODATION

Based in Luton our Respite accommodation is available to any independent individuals who require a safe space for respite. Price plans are available on application.

4

5

BURSARY

In conjunction with our sister company MMAS Foundation the SAPAS / MMAS Support Bursary is where we award individuals or businesses a support bursary which can be used in several ways - the core focus being support.

LUNCH 'N' LEARN

Our Thursday club in conjunction with our sister company MMAS Foundation offers a safe space to adults who may require support with their day to day living. This session focuses on gaining new skills, making new friends and building confidence.

6

7

LOCATION PROVISION

Our ANGELS are now available within a wider area allowing us to reach out to a wider audience. Our services are now available in Beds, Bucks and Herts.

Please contact us to find out how our services can support you.